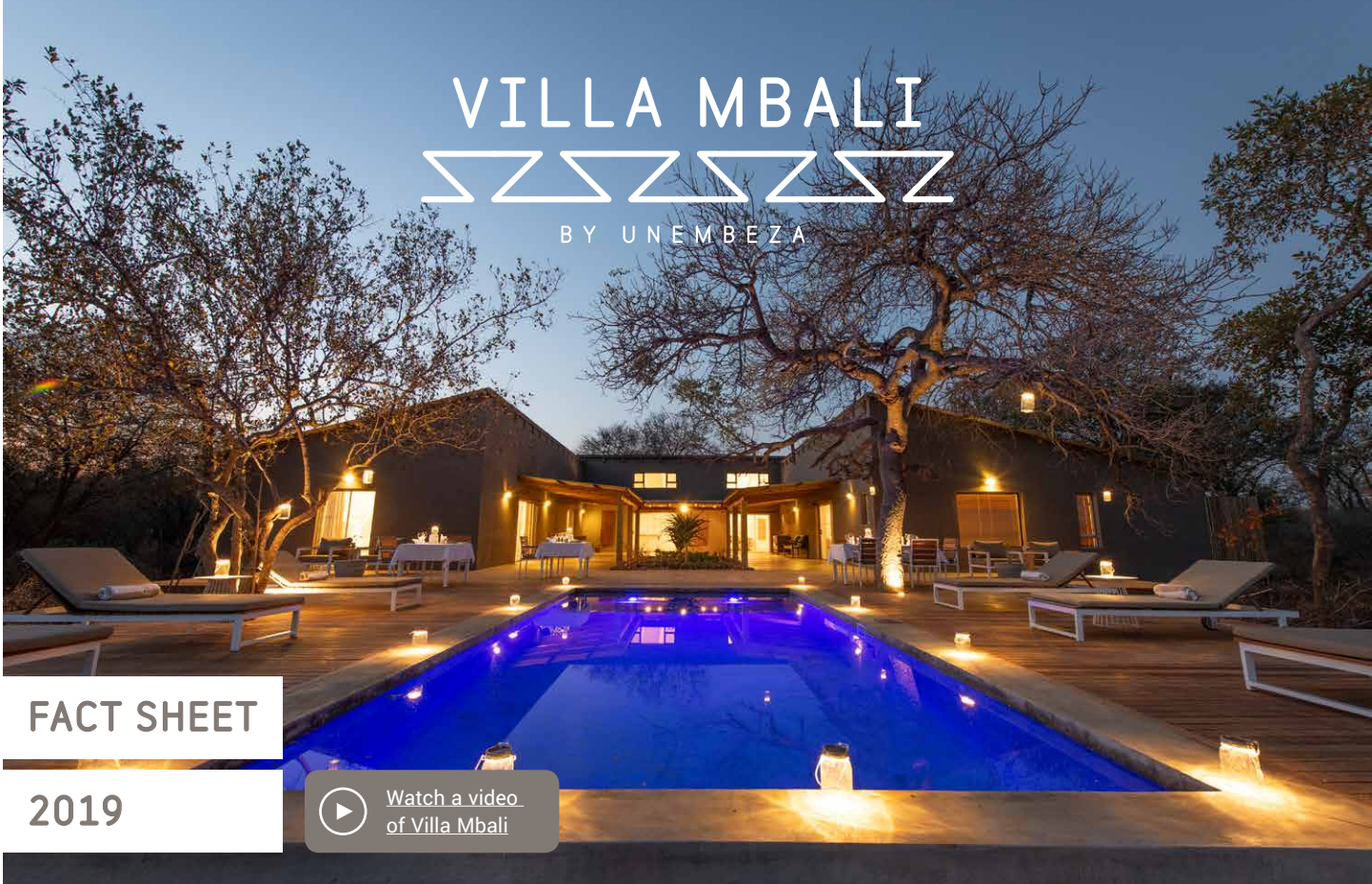


# VILLA MBALI

BY UNEMBEZA



## FACT SHEET

2019



Watch a video of Villa Mbali

Connect with nature at **Unembeza Boutique Lodge** in Hoedspruit, South Africa's wildlife haven

Villa Mbali, which means "Villa of flowers", is a 3 roomed villa with its own staff compliment. True to our Unembeza Vision this house is built from sandbags, making it very eco-conscious.

Villa Mbali is within walking distance from the main lodge and guests have full access to all other facilities such as the bush spa, mountain bikes and gift shop.

Hoedspruit is located between the world-renowned Blyde River Canyon and the Kruger National Park and nature-loving guests will marvel at the beauty and bio-diversity that exists on the doorstep of this boutique bush villa.

Unembeza Boutique Lodge & Spa is situated on the greenbelt of the Hoedspruit Wildlife Estate which means our closest neighbours are free roaming general game species such as Giraffes, Zebra, Kudu and Warthogs, but guests must also keep an eye out for our resident leopards which are seen on a regular basis.

The absence of lions, elephants, buffalo's and rhino's allow our guests to explore nature and discover their inner ranger either on foot, during a mountain bike outing, or even on horseback.

Unembeza offers a carefully curated selection of custom safari's, tours and activities. We only use approved external safari companies, which means our guests can rest assured that they will receive the best service at all times. We are genuinely a one stop destination where our guests can enjoy everything the Lowveld has to offer.



KRUGER • CANYON • CULTURE • ADVENTURE

## Additional Important Information:

- 1 x Family Wing with main entrance, 2 separate bedrooms and 2 bathrooms. Sleeps 5 guests.
- 1 x Garden Suite which can take an extra bed and sleeps 3 guests.
- 1 x Deluxe double room.
- Private Pool.
- Viewing tower with stunning views of the bush and the mountains.
- Complimentary high-speed internet.
- All rooms have fixed extra length king size beds with mosquito nets.
- Please book the Garden Suite with an additional bed should you require a twin room configuration.
- Rooms have air-conditioning, hairdryers, organic bathroom amenities, Nespresso machines and tea making facilities.
- Laptop size electronic safes.
- Breakfast (included), lunch (on request) and dinners (4-course) are served at Villa Mbali.
- Mbali serves the same delicious menus as at the main lodge.
- On site Bush Spa with traditional African treatments such as Calabash and Rungu stick massages. We also offer manicures and pedicures. The Bush Spa is located at the main lodge.
- Full bar available with the same wine and beverage menu as the main lodge.
- Check in at Mbali and check out at reception at the main lodge.
- Parking available at Villa Mbali.
- No kids under the age of 6 allowed.
- No pets allowed.
- Villa Mbali is not wheelchair friendly.

## Rates:

- The family wing is for both rooms per night incl. breakfast.
- Garden Suite and Deluxe room is per room per night incl. breakfast.
- The Garden Suite can take an additional child (ZAR 500 p/night) or adult (ZAR 950 p/night).
- Lunch platters available at ZAR 175 per person.
- Dinner is a 4 course meal at ZAR 350 per person.
- No self-catering or own drinks allowed on the premises.
- All beverages, gratuities, laundry and extra activities are excluded from the rate.
- Rates can change without prior notice, but all confirmed reservations rates will be honoured.

## Payment Policy:

- We require a 50% non-refundable deposit within 48hrs from booking.
- The balance is required 42 days prior to arrival.
- EFT payments are accepted via our South African Nedbank account.
- Contact us for a secure payment link should you wish to pay via Visa or Mastercard.
- We accept no Foreign Currency, Diners Club or American Express Cards.



## Activities and Tours

| Duration                                        | Price                     |
|-------------------------------------------------|---------------------------|
| <b>Kruger National Park Safari</b>              |                           |
| 11 hours (full-day)                             | 2-9 people: ZAR 1,975 pp  |
| <b>Panorama Route</b>                           |                           |
| 10 hours                                        | 2-9 people: ZAR 1,900 pp  |
| <b>Moholoholo Rehabilitation Centre</b>         |                           |
| 8:30 or 14:00<br>(4 hours, no shows on Sundays) | 2-9 people:<br>ZAR 850 pp |
| 9 hours including boat trip                     | ZAR 1,850 pp              |
| <b>Sundowner Safari</b>                         |                           |
| 4 hours                                         | 2-9 people: ZAR 975 pp    |
| <b>Mountain Bike Rental</b>                     |                           |
| Mountain bike rental<br>(up to 3 hours)         | ZAR 150 per bike          |
| With private guide<br>(additional per trip)     | ZAR 250 per trip          |
| <b>Horse-Back Safari</b>                        |                           |
| 1 hour                                          | ZAR 650 pp                |
| 2 hours                                         | ZAR 850 pp                |
| <b>Nyani Cultural Village</b>                   |                           |
| 4 hours                                         | ZAR 1,100 pp              |
| <b>Hot Air Ballooning</b>                       |                           |
| 4 hours                                         | ZAR 5,500 pp              |
| <b>Unembeza Bush Spa</b>                        |                           |
| Spa menu available upon request                 |                           |

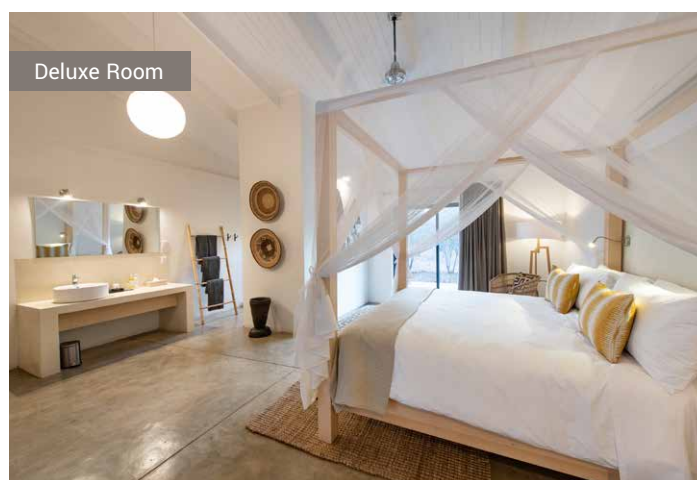
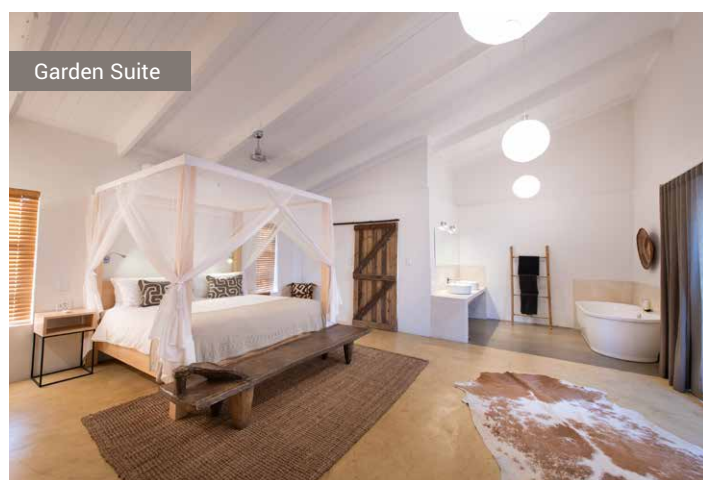
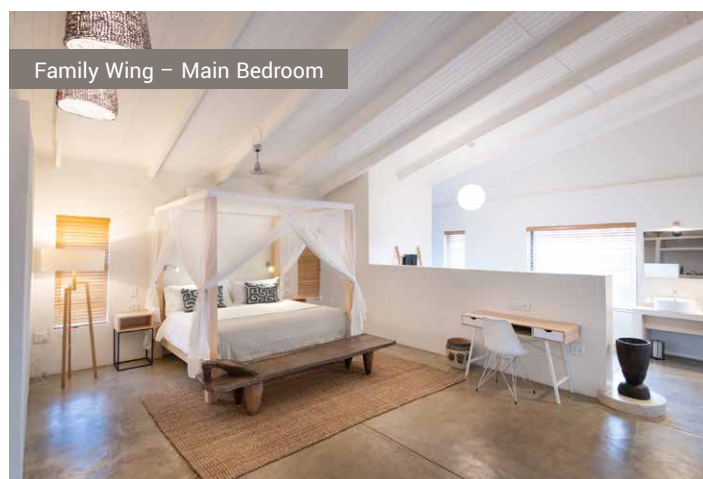


## Room configuration & information:

|                  | Family Wing                  | Garden Suite | Deluxe Room |
|------------------|------------------------------|--------------|-------------|
| nr of units      | 1                            | 1            | 1           |
| m <sup>2</sup>   | 90                           | 50           | 35          |
| sleeps max       | 5                            | 3            | 2           |
| shower outside   | ✓                            | ✓            | ✓           |
| bath inside      | ✓                            | ✓            |             |
| extra bed option |                              | ✓            |             |
|                  | 1 King bed,<br>3 Single beds |              |             |

## 2019 Rates

| Rack rates 2019 |              |           |           |
|-----------------|--------------|-----------|-----------|
| Double          | ZAR 5,500    | ZAR 3,500 | ZAR 2,650 |
| Single          | for the unit | ZAR 2,400 | ZAR 1,750 |



KRUGER • CANYON • CULTURE • ADVENTURE